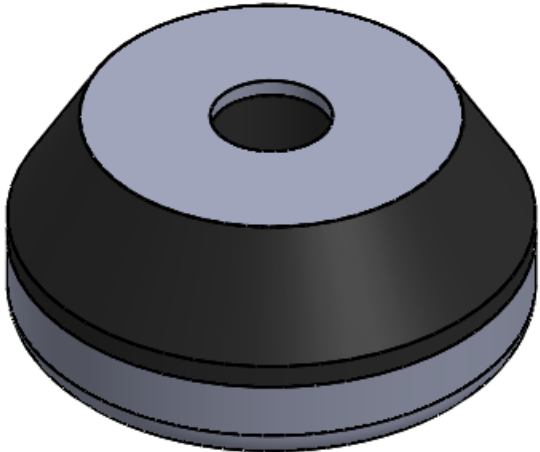


REVISIONS			
REV.	DESCRIPTION	DATE	APPROVED
1	INITIAL RELEASE OF DRAWING	6/6/2014	BS
2	THRU HOLE DIAMETER IS Ø .64, WAS Ø .625, CLEARANCE HOLE DIAMETER IS Ø 1.19, WAS Ø 1.29.	8/21/2014	BS



- NOTES:
- 1 MATERIAL: ELASTOMER AND DUROMETER OF 40, 50, 60 OR 70 TO BE SPECIFIED.
 - 2 ALL DIMENSIONS ARE REFERENCE.

SIGNATURE		DATE
DRAWN	B. SENECAL	06/06/2014
CHECK	S. BROWN	06/06/2014
ENGR	B. SENECAL	06/06/2014
QA		
STRESS		
APPR		

PROPRIETARY AND CONFIDENTIAL
THE INFORMATION CONTAINED IN THIS DRAWING IS THE SOLE PROPERTY OF KARMAN RUBBER. ANY REPRODUCTION IN PART OR AS A WHOLE WITHOUT THE WRITTEN PERMISSION OF KARMAN RUBBER IS PROHIBITED.

UNLESS OTHERWISE SPECIFIED:
DIMENSIONS ARE IN INCHES
TOLERANCES:
.X = ±
.XX = ± 0.062
.XXX =
ANGLES = ± 1°
INTERPRET GEOMETRIC TOLERANCING PER: ASME Y14.5M-1994

KARMAN RUBBER VIBRO-INSULATORS®
FOR CONTROLLING NOISE, SHOCK & VIBRATION

SIZE	CAGE CODE
B	
DO NOT SCALE DRAWING	

AR	ELASTOMER	K50-4	1	4
1	WASHER	MK50W		3
1	CUP	MK50C		2
	K50	K50		1
QTY.	DESCRIPTION	PART NUMBER	MATERIAL OR NOTES	ITEM

TITLE: **K50 VIBRO-INSULATOR**
WWW.KARMAN.COM

DWG. NO.	REV
K50	2
SCALE: 1:1	WEIGHT: 8.10 OZ.
SHEET 1 OF 1	